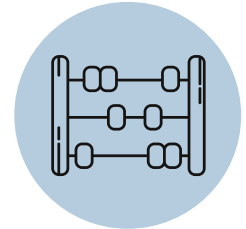


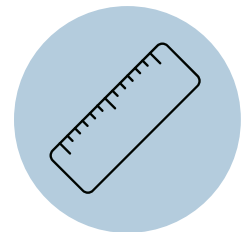
# EASTERN ROSELLA

## cross stitch pattern



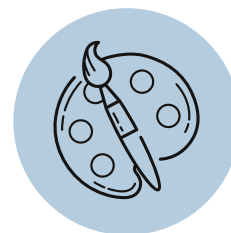
### Stitch Count

83 width x 139 height  
(4818 total stitches)



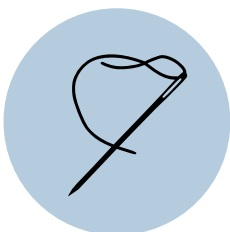
### Size \*

15.1 cm x 25.2 cm  
(5.9" x 9.9")  
14 count Aida



### Thread Colours

28 DMC stranded  
cotton



### Stitch Types

Backstitch,  
Blended colours,  
3/4 cross stitches,  
Whole cross stitches



### Skill Level

Advanced beginner /  
Intermediate



Honeyeater  
Crafts

\* does not include margins for framing